

Stretch Ceiling and Lighting Installation Guide

Introduction

"Effortless Installation for Transformative Design"

Our stretch ceilings and lighting systems are designed for a seamless and efficient installation process. This guide provides step-by-step instructions to ensure a smooth, hassle-free installation.

Tools and Materials Required

- Measuring tape
- Laser level
- Stretch ceiling material
- Custom-engineered LED lights
- Aluminum perimeter track
- Heat gun or specialized ceiling stretcher
- Safety equipment (gloves, goggles)
- Drill and screws
- Electrical wiring tools

Pre-Installation

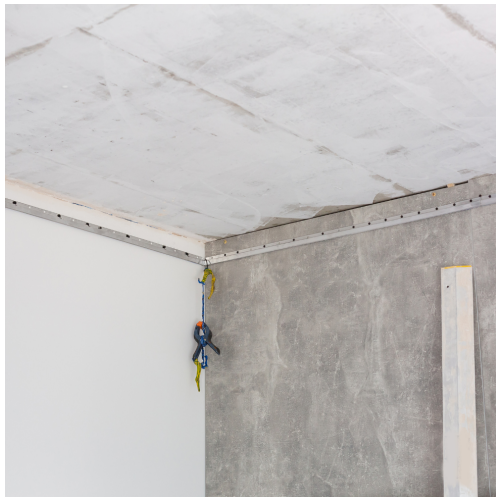
- **Site Preparation:**
 - Clear the area where the stretch ceiling will be installed.
 - Ensure the room temperature is between 10°C and 25°C.
 - Check that the ceiling space is free from dust and debris.
- **Measurements and Planning:**
 - Accurately measure the ceiling area.
 - Refer to the AutoCAD drawing to plan the layout of the stretch ceiling and lighting.
 - If specialised niches are being created for installation, please ensure that the builder has everything built to dimension.

Installation Process

- **Aluminum Perimeter Track Installation:**
 - Using a laser level project a level to ensure aluminium track installation is level.



- Install the aluminum track around the perimeter of the ceiling using a drill and screws.



- **LED Lighting System Setup:**
 - Install the LED lighting as per the engineered plan provided by Caribbean LED Solutions.



- Connect and test the electrical wiring to ensure proper functionality.



- **Stretch Ceiling Installation:**

- Unroll the stretch ceiling material and acclimatize it to room temperature.



- Spread the ceiling and tether the corners to the corners equally.



- Begin at one corner and gradually insert the edge of the film into the track.



- Use a heat gun or high-powered heater (for large installations) to gently heat and stretch the material, moving towards the opposite corner.



- Ensure the material is evenly tensioned and securely fixed into the track.



- **Final Adjustments and Testing:**
 - Trim any excess material from the edges.
 - Conduct a final check to ensure the ceiling is taut and smooth.
 - Test the LED lighting system again to confirm everything is working correctly.

Post-Installation

- **Clean Up:**
 - Remove any installation debris and clean the area.
- **Inspection:**
 - Conduct a thorough inspection of the installed stretch ceiling and lighting.
 - Ensure that everything is properly secured and functioning as intended.

Safety and Tips

- Always wear appropriate safety gear.
- Follow electrical safety standards while handling lighting installations.
- If you encounter any difficulties, consult a professional or reach out to our support team.

Conclusion

"Your Vision, Flawlessly Executed"

With this guide, installing your stretch ceiling and lighting system should be a straightforward process. However, for complex designs or if you prefer professional installation, our team is always ready to assist.